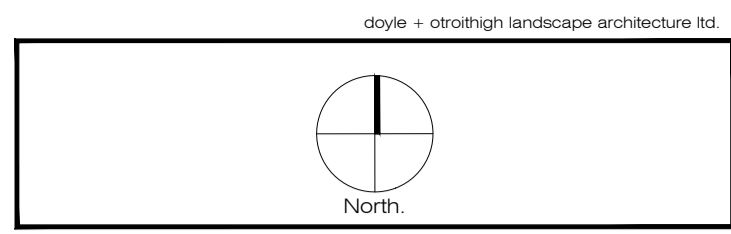
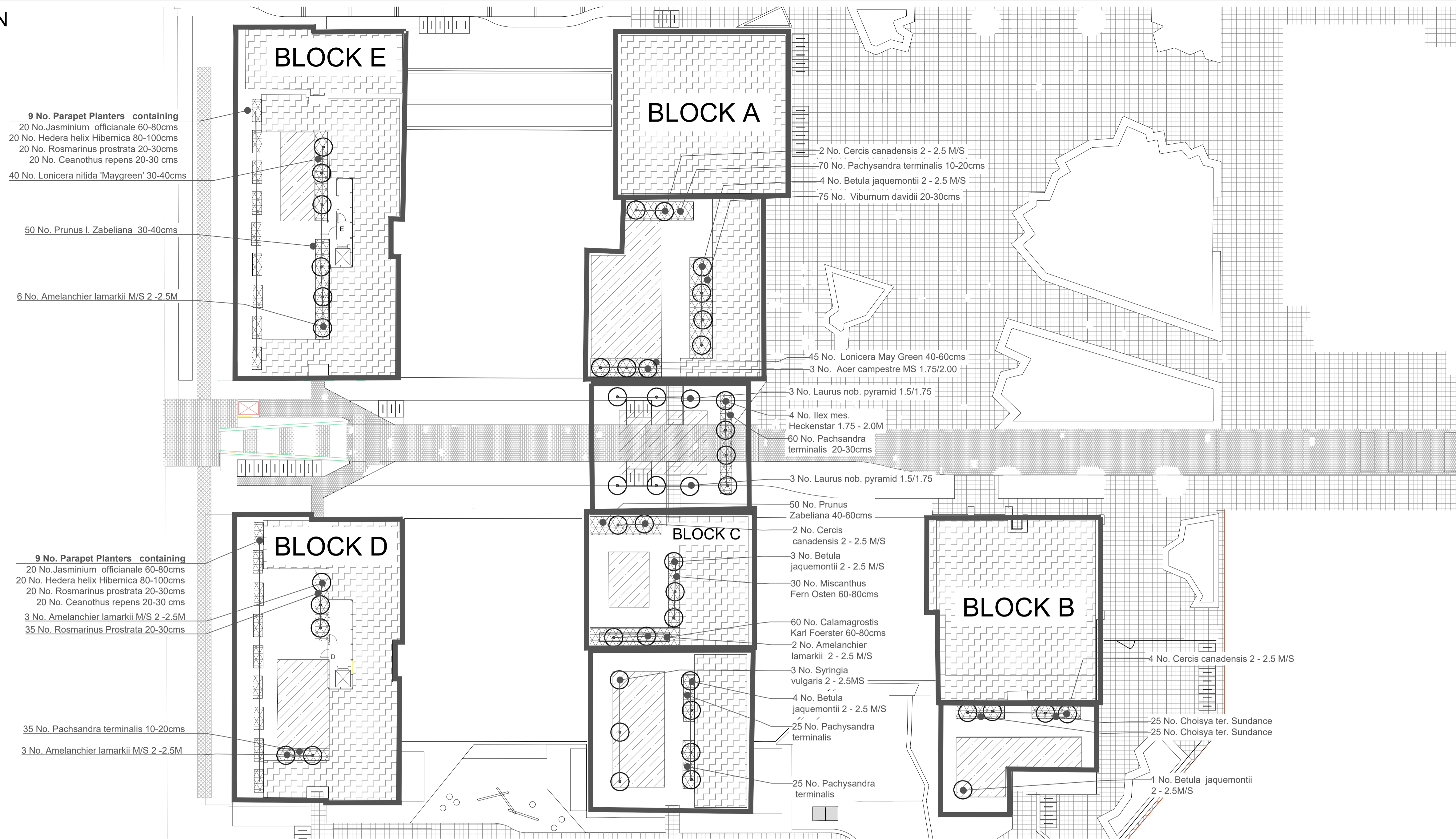


ROOF PLANTING PLAN

Scale 1:250



Note:

Legend

- Large Tree 20cms +
- Medium Tree 14-20cms
- Small Tree up to 14cms
- SHRUBS
- HEDGE
- GRASS
- SEDUM
- BULB PLANTING

See Doyle O'Troithigh Drawing No. PP-01-PP for main podium and courtyard planting layout.

HSQ PLANTING SCHEDULE - GROUND & ROOF LEVELS

| TREES | | | | | | PP-HSQ-PP | |
|----------------------------|------------------|---------|------------|----------|--|-----------|--|
| Botanical Name | Common Name | Dia Cm. | Height Cm. | Root No. | | | |
| Acer campestre | Field Maple | MS | 175-200 | RB | | 3 | |
| Acer campestre Elsrijk | Field Maple | 14-16 | 300-350 | RB | | 10 | |
| Amelanchier lamarkii | Mespil | 12 - 14 | 300-350 | RB | | 3 | |
| Amelanchier lamarkii | Mespil | MS | 200-250 | RB | | 15 | |
| Betula pubescens | Downy Birch | 18-20 | 400-450 | RB | | 8 | |
| Betula jaquemontii | Silver birch | 20-25 | 50-600 | RB | | 4 | |
| Betula jaquemontii | Silver Birch | 12 - 14 | 300-350 | RB | | 3 | |
| Betula jaquemontii | Silver birch | MS | 200-250 | RB | | 16 | |
| Cercis can. 'Forest Pansy' | Redbud | MS | 200-250 | RB | | 11 | |
| Corylus avellana | Hazel | MS | 200-250 | RB | | 1 | |
| Crataegus Paul's Scarlet | Hawthorn | 14-16 | 300-350 | RB | | 12 | |
| Crataegus Paul's Scarlet | Hawthorn | MS | 250-300 | RB | | 3 | |
| Fagus syl. Dawycks Gold | Ornamental Beech | | 400-450 | RB | | 10 | |
| Ilex mess. Heckenstar | Holly | | 175-200 | RB | | 19 | |
| Laurus nob. Pyramid Shape | Bay | | 150-175 | RB | | 6 | |
| Liquidamber Worpelsdon | Liquidamber | 18-20 | 400-500 | RB | | 7 | |
| Magnolia Galaxy | Magnolia | 14-16 | 300-400 | RB | | 1 | |
| Malus White Star | Apple | 14-16 | 250-300 | RB | | 2 | |
| Malus Evereste | Apple | 14-16 | 300-350 | RB | | 3 | |
| Pinus sylvestris | Scots Pine | | 300-350 | RB | | 6 | |
| Prunus maakii Amber Beauty | Cherry | MS | 200-250 | RB | | 1 | |
| Prunus avium 'Plena' | Wild Cherry | 18-20 | 400-450 | RB | | 2 | |
| Pyrus call. Chanticleer | Pear | MS | 300-350 | RB | | 1 | |
| Sorbus auc Cardinal Royal | Rowan | 16-18 | 300-350 | RB | | 4 | |
| Syringia vulgaris | Lilac | 12-14 | 250-300 | RB | | 9 | |
| Taxus bacc. Cone Shape | Yew | | 1.6/1.7M | RB | | 19 | |
| Tillia eur Pallida cube | Lime | 25-30 | 400-450 | RB | | 16 | |
| Viburnum bodnantense Dawn | Viburnum | MS | 1.5/1.7M | RB | | 8 | |

| SHRUB PLANTING | | | | | | PP-HSQ-PP | |
|----------------------------|------------------------|-------|--------------|-----|--|-----------|--|
| Botanical Name | Common Name | Ht. | Root Zone/M2 | No. | | | |
| Agapanthus Blue | African Lily | 20-30 | 3 L | 4 | | 75 | |
| Choisya ter. Sundance | Mexican orange Blossom | 40-60 | 2L | 3 | | 220 | |
| Crocosmia Lucifer | Montbretia | 40-60 | 2 L | 3 | | 70 | |
| Helleborus orientalis | Hellabore | 30-40 | 3 L | 7 | | 200 | |
| Hydrangea Annabelle | Hydrangea | 40-60 | 2 L | 3 | | 175 | |
| Hydrangea Limelight | Hydrangea | 40-60 | 2 L | 3 | | 165 | |
| Lonicera nit. May Green | Shrub honeysuckle | 40-60 | 2L | 3 | | 85 | |
| Pachysandra terminalis | Japanese Spurge | 20-30 | 2 L | 7 | | 475 | |
| Prunus Otto Luyken | Laurel | 40-60 | 2 L | 3 | | 210 | |
| Prunus zabeliana | Cherry Laurel | 40-60 | 2 L | 3 | | 510 | |
| Rudbeckia Goldstrum | Coneflower | 30-40 | 2L | 3 | | 50 | |
| Rosa Flower Carpet - Ruby | Rose | 40-60 | 2L | 3 | | 75 | |
| Rosa Flower Carpet - White | Rose | 40-60 | 2L | 3 | | 190 | |
| Rosmarinus off. Prostrata | Rosemary Prostrate | 20-30 | 2 L | 3 | | 75 | |
| Sarcococca confusa | Sweet Box | 40-60 | 2 L | 3 | | 240 | |
| Viburnum davidii | Viburnum | 40-60 | 2 L | 3 | | 1190 | |

| ORNAMENTAL GRASS PLANTING | | | | | | PP-HSQ-PP | |
|-----------------------------|-----------------------|-------|-----------|---------------|-----|-----------|--|
| Botanical Name | Common Name | Ht. | Height Cm | Root Zone /M2 | No. | | |
| Calamagrostis brachytricha | Feather Reed Grass | 60-80 | | 2L | 3 | 275 | |
| Calamagrostis Karl Foerster | Feather Reed Grass | 60-80 | | 2 L | 3 | 110 | |
| Miscanthus 'Fern Osten' | Japanese Silver Grass | 60-80 | | 2 L | 3 | 30 | |

| HEDGE PLANTING | | | | | | PP-HSQ-PP | |
|---------------------------|-------------------|---------|------------|------------------|-----|-----------|--|
| Botanical Name | Common Name | Dia Cm. | Height Cm. | Root Zone/Lin. M | No. | | |
| Carpinus bet. | Hornbeam | | 90-120 | BR | 5 | 640 | |
| Prunus laur. Angustifolia | Portuguese Laurel | | 80-100 | RB | 5 | 240 | |
| Prunus laur. Rotundifolia | Portuguese Laurel | | 1.75/2.0 | RB | 2 | 230 | |

| BULBS | | | | | | PP-HSQ-PP | |
|--------------------------|------------------|---------|------------|--------------|-----|-----------|--|
| Botanical Name | Common Name | Dia Cm. | Height Cm. | Root Zone/M2 | Qty | | |
| Allium White Giant | Ornamental Onion | | | | | 100 | |
| Allium Purple Senstation | Ornamental Onion | | | | | 150 | |
| Narcissus 'Thalia' | Orchis Narcissus | | | | | 1300 | |
| Tulip 'Triumphator' | White Tulip | | | | | 1285 | |

| WOODLAND UNDERSTOREY PLANTING | | | | | | PP-HSQ-PP | |
|-------------------------------|--------------|---------|------------|--------------|-----|-----------|--|
| Botanical Name | Common Name | Dia Cm. | Height Cm. | Root Zone/M2 | Qty | | |
| Ilex aquifolium | Holly | | 60-80 | 2 L | 2 | 60 | |
| Rosa Canina | Dog Rose | | 60-90 | 1+1 | 2 | 350 | |
| Rosa Rugosa | Ramnas Rose | | 40-60 | 1+1 | 2 | 120 | |
| Viburnum opulus | Guelder Rose | | 60-90 | 1+1 | 2 | 265 | |

All planted areas to be finished with a 75MM depth covering of rough grade bark mulch

| CLIMBING TRAILING PLANTS | | | | | | PP-HSQ-PP | |
|------------------------------|------------------|---------|------------|--------------|-----|-----------|--|
| Botanical Name | Common Name | Dia Cm. | Height Cm. | Root Zone/M2 | Qty | | |
| Ceanothus thry. Repens | California lilac | | 20-30 | | | 40 | |
| Hedera helix Hibernica | Ivy | | 80-100 | | | 40 | |
| Jasminum officinale | Jasmine | | 60-80 | | | 40 | |
| Parthenocissus henryana | Virginia Creeper | | 60-80 | | | 30 | |
| Parthenocissus tri. veitchii | Virginia Creeper | | 60-80 | | | 46 | |
| Parthenocissus quinquefolia | Virginia Creeper | | 60-80 | | | 30 | |
| Trachleospermum jasminoides | Virginia Creeper | | 60-80 | | | 46 | |

Date Note

| | |
|---|-----------------------------|
| Project name: HSQ KILMIANHAM | Project number: 20-029 |
| Drawing name: Planting Plan 02 - Roof Terraces | Drawing number: PP-02-PP |

| | | |
|------------------------------|---------------------|--------------------|
| Drawing scale @ A1: 1:250 | Drawn by: dos | Checked by: dot |
| Status: Planning | date: 16.09.2021 | |

| | |
|--|---|
| Contact details: Linda Doyle (Director) mobile: 087 267 4196 e-mail linda@doyle-otroithigh.com Daire O'Troithigh (Director) mobile: 086 300 3499 e-mail daire@doyle-otroithigh.com | Office address: Pentecost House 29/32 Lower Pembroke Street Dublin 2 |
|--|---|

doyle + o'troithigh
landscape - architecture